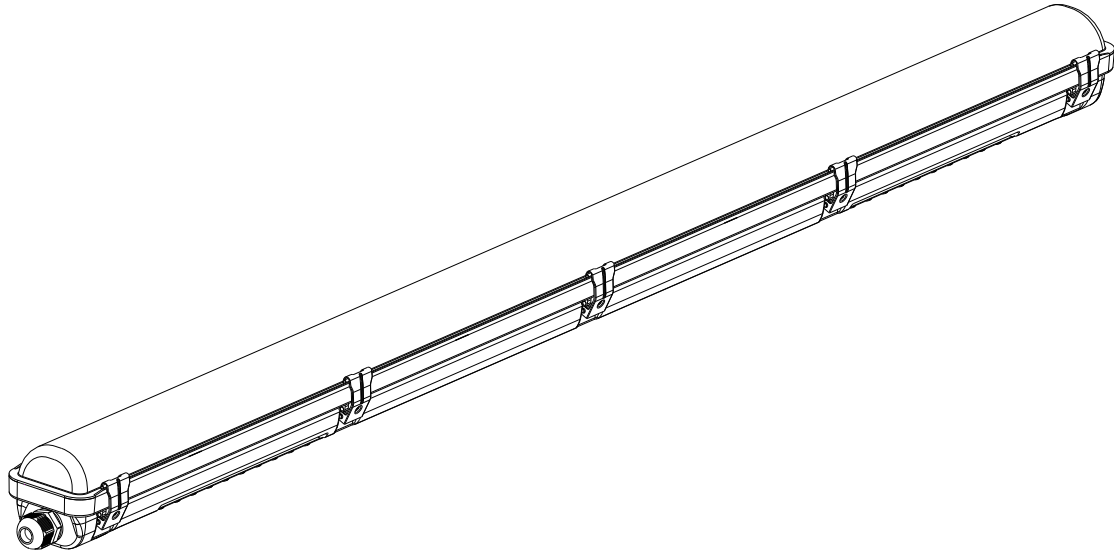


AG-TP-E Model Series

IP66 LED Waterproof Luminaire



PRODUCT SPECIFICATION:



A & A Global Resources Pvt. Ltd.

327, Siddharth Towers 12/3B, Kothrud, Pune, Maharashtra 411038
Website: <http://www.smt-india.com/>
Contact: Ashutosh Agate | agate@smt-india.com | +91 93255 44783

AG-TP-E Series

IP66 LED Waterproof Luminaire



PRODUCT SPECIFICATIONS:

- **Construction:** One-piece polycarbonate housing with one-piece polycarbonate lens and 304 stainless steel clips. The standard color is Grey (RAL7035)
- **LED System:** LED system with a life rating of >50,000 hours luminaire efficiency up to 150 lm/W
- **Electrical:** Offered in 18, 36, 48 and 60 Watts, the luminaire is designed to operate through the 220-240V_{AC} universal voltage
- **Option:** Emergency / Sensor / CCT Adjustable / 5x2.5mm² through wiring is available
- **Color Characteristics:** CRI>80; CCT of 3000K- 6500K
- **Installation:** Ceiling mounted / Chain suspension / Wall mounted
- **Operating Temperature:** -20°C to +40°C , Emergency mode:0°C to +40°C
- **Listings:** CE, CB, RoHS, IP66 rated, IK08, ENEC, GWT850, UKCA
- **Warranty:** Standard 5-year luminaire warranty

PRODUCT FEATURES:

- Corrosion resistant housing with captive stainless steel mounting accessories
- IP66 rated, and a wide operating temperature -20°C to 40°C.
- Optional integrated microwave (daylight / motion) sensor for additional energy savings
- Optional Emergency kit (2W 3hrs or 4W 3hrs)



AG-TP-E Series

IP66 LED Waterproof Luminaire



Double-row LED Module



Product Specification

Model	AG-TP-E-600-30	AG-TP-E-600-40	AG-TP-E-1200-40	AG-TP-E-1200-60	AG-TP-E-1200-80	AG-TP-E-1500-80	AG-TP-E-1800-80	AG-TP-E-1800-100
Input Voltage(V)	AC220-240V 50/60Hz							
System Power	30W	40W	40W	60W	80W	80W	80W	100W
PCB Layout	Double-row LED module							
Light Efficacy (lm/W)	160-170 Lumens per Watt							
CCT	3000K / 4000K / 5000K / 5700K / 6500K							
CRI	80							
Power Factor	> 0.9							
SDCM	< 4							
Beam Angle	120°							
IP rating	IP66							
IK rating	IK08							
Emergency	OPTION							
Sensor	OPTION							
TA	-20°C~+40°C							
Mounting	Ceiling, Wall mount, Suspension							
Warranty	3 years / 5 years							
Product size	676*120*76mm		1236*120*76mm		1536*120*76mm		1836*80*76mm	
Innerbox size	683*123*79mm		1243*123*79mm		1543*123*79mm		1843*83*79mm	
Carton size	700*333*386mm		1260*333*263mm		1660*253*263mm		1860*333*183mm	
Qty	12pcs		8pcs		6pcs		8pcs	



A & A Global Resources Pvt. Ltd.

AG-TP-E Series

IP66 LED Waterproof Luminaire



PRODUCT SIZE Double-row LED Module

- 676*120*75mm



- 1236*120*75mm



- 1536*120*75mm



- 1836*120*75mm

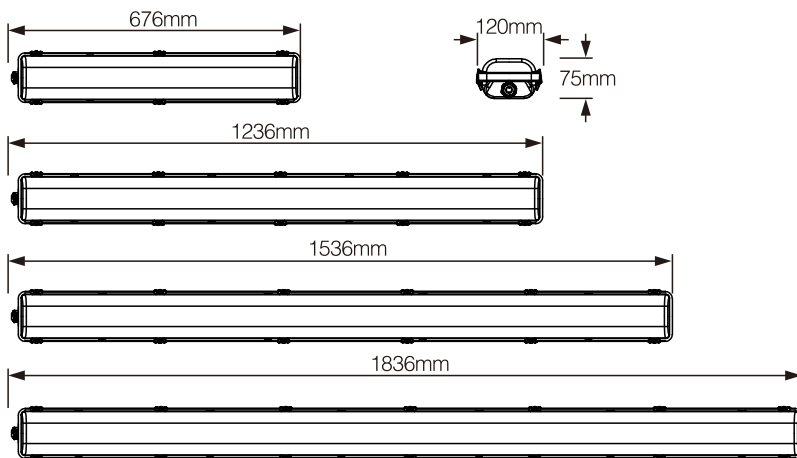
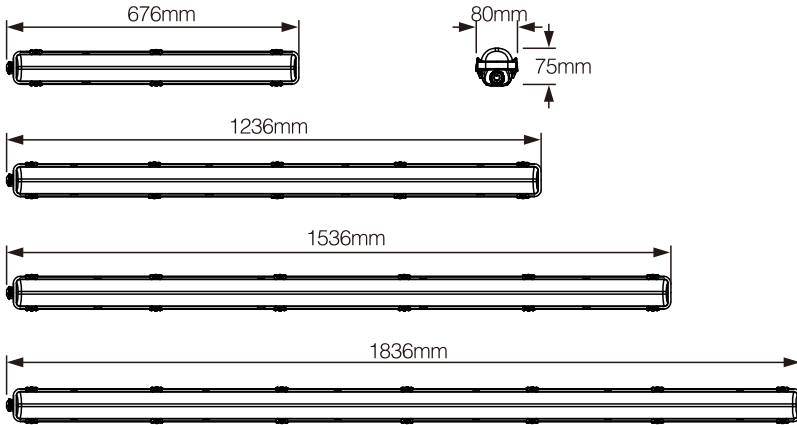


AG-TP-E Series

IP66 LED Waterproof Luminaire



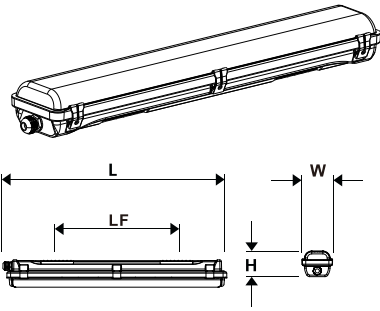
DIMENSION:



APPLICATION:

Warehouses, gyms, factories, outdoors, cold storages and offices, etc.



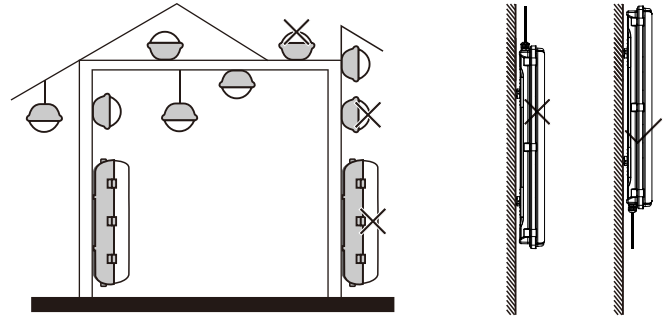


	L	W	H	LF
600mm	660	80	76	350
1200mm	1220	80	76	810
1500mm	1520	80	76	1100
1800mm	1820	80	76	1400

Single-row LED Module

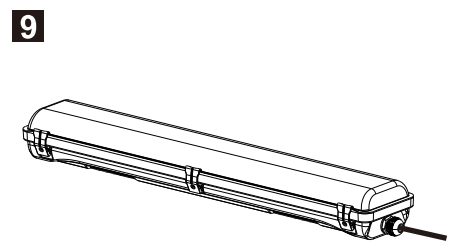
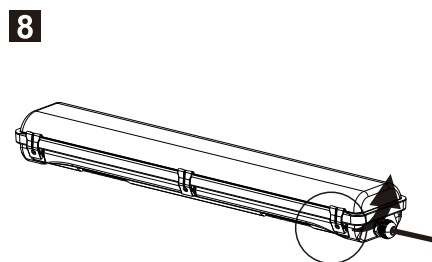
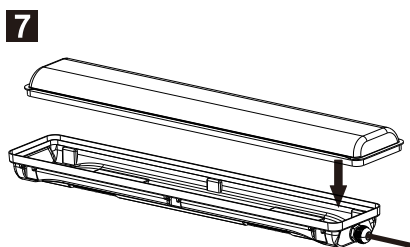
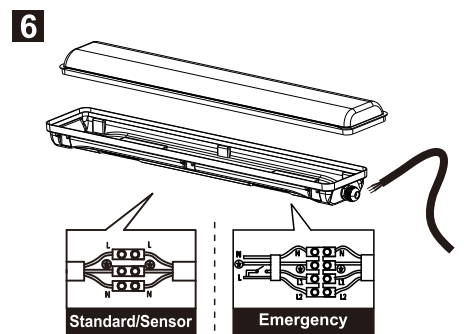
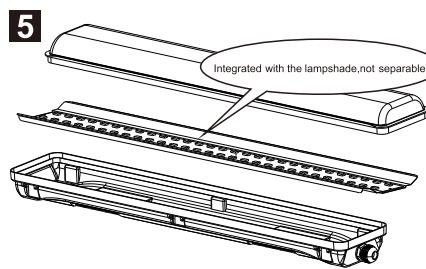
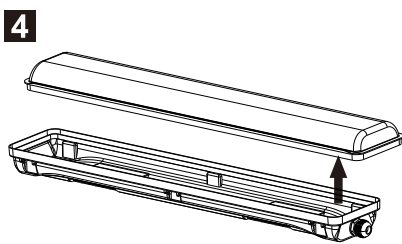
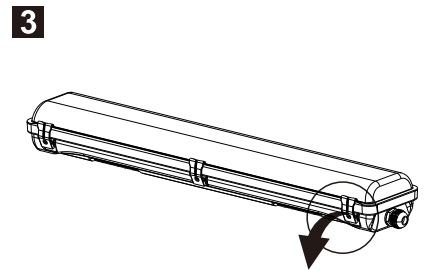
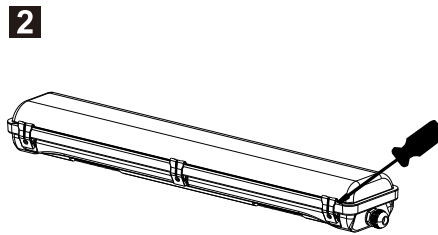
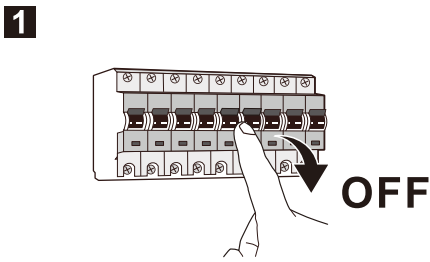
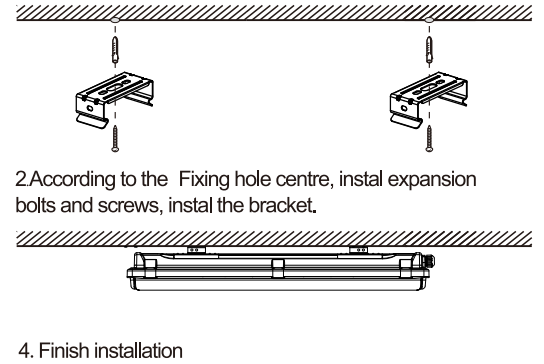
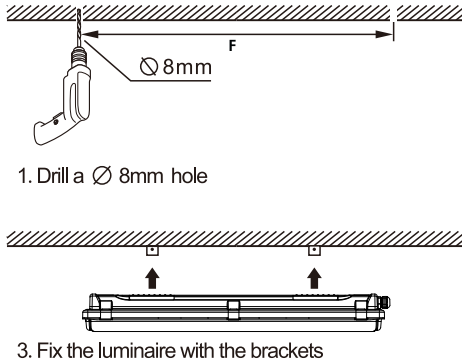
	L	W	H	LF
600mm	660	102	76	350
1200mm	1220	102	76	810
1500mm	1520	102	76	1100
1800mm	1820	102	76	1400

Double-row LED Module



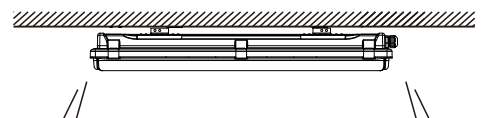
! WARNING

- 1 Installation should be done by registered electricians.
- 2 Never touch the working luminaire
- 3 In any case of malfunction, switch off the power supply immediately, and do not try to repair it yourself.
- 4 Repairment should only be done by registered electricians or official service agent.



! WARNING

Switch off the power supply before installation



Sensor for option



12VDC Microwave Sensor In IC Solution

HDI03VCR-2



- On/Off Control
- Detection Area
- Stand-by period
- Stand-by dimming level
- Daylight Sensor
- Hold Time
- Warranty
- Remote Control

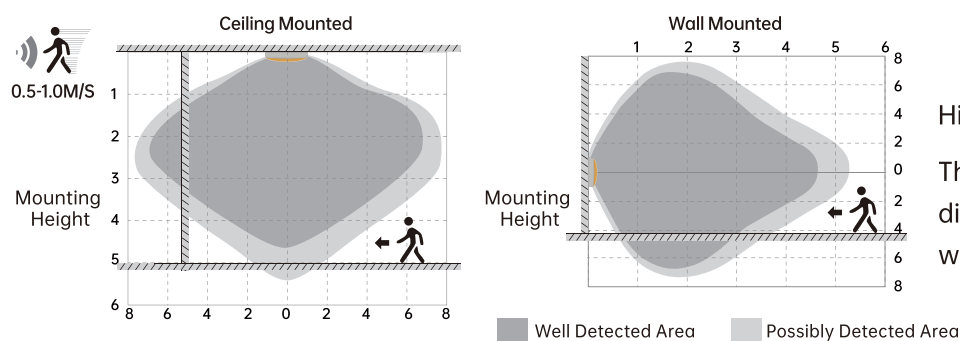


- 12VDC Input, PWM Dimmable
- Original IC Solution
- DIP Switches & Remote Control
- Small Size, One For All

Technical Data

Operating Voltage 10-15V	Detection Area DIP Switch:50%/100% Remote:25%/50%/75%/100%	Microwave Power <0.3mW
Operating Current <30mA	Hold Time DIP Switch: 5s/30s/1min/10min Remote: 5s/30s/1min/10min/20min/30min	
Stand-by Power <0.5W	Daylight Threshold DIP Switch: 50Lux/Disable Remote: 2Lux/10Lux/15Lux/50Lux/80Lux/120Lux/Disable	
Control Method PWM	Stand-by period DIP Switch: 0s/1min Remote: 0s/10s/30s/1min/5min/10min/20min/30min/+∞	Microwave Frequency 5.8GHz±75MHz
Switching Capacity Current <40mA	Stand-by dimming level DIP Switch: 10%/30% Remote: 10%/20%/30%/50%	IP Rating IP20
Mounting Height 2.5-4.5m/8.2-14.76ft Ceiling Mounted	Detection Angle Side Wall <150° Ceiling Mounted 360°	Warranty 5 years
Detection Range ø6-14m/19.68-45.93ft Ceiling Mounted	Connection 3 Pin Output for VCC , GND , PWM	Operating Temperature -20°C~+70°C

Detection Patterns



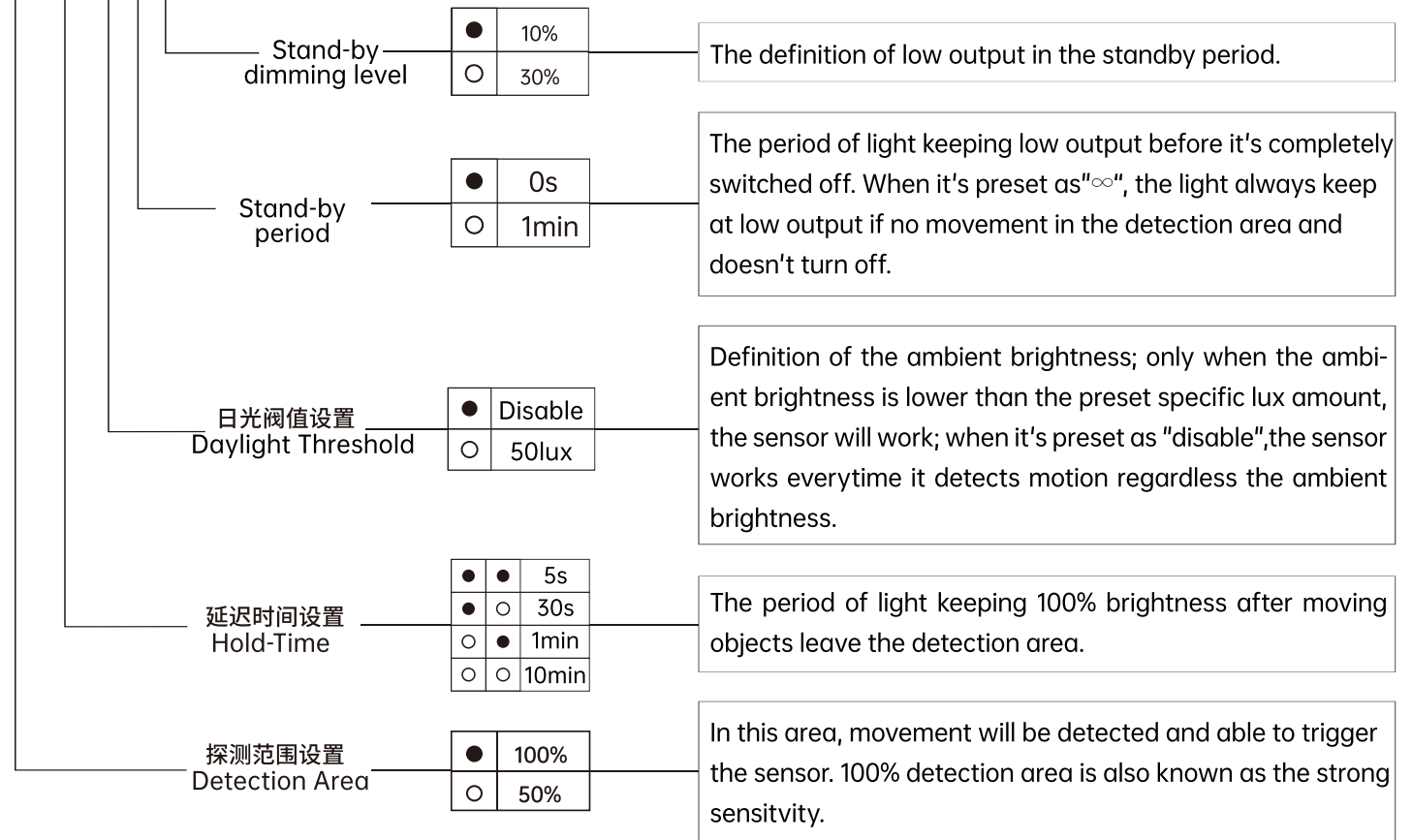
Highest mounting height is 4.5m
This figure indicates the maximum distance at the highest mounting height with 100% sensitivity.

Factory Default Setting: Detection area 100%/ Hold time 5s/ Daylight threshold Disable/Stand-by period 0s/ Stand-by dimming level 10%. Can be customized default programming.

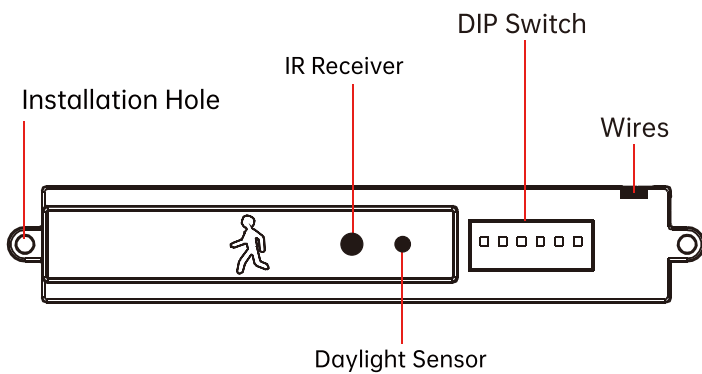
DIP Switch Setting



● Switch UP
○ Switch DOWN

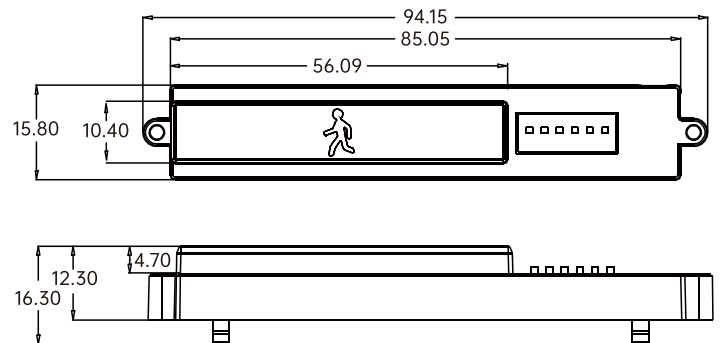


Mechanical structure

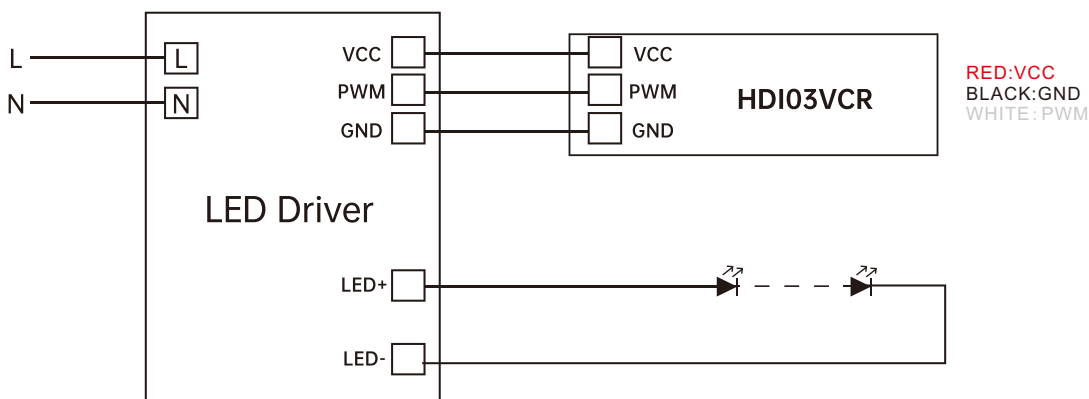


Dimensions

Unit:mm

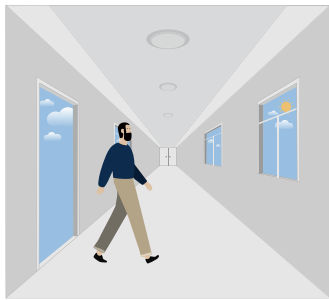


Wiring Diagram

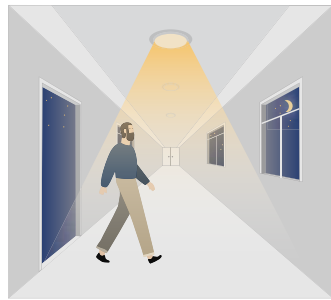


Performance

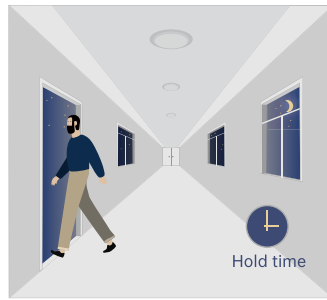
1. Automatically ON/OFF function



With sufficient daylight, even when motion detected, light remains OFF.



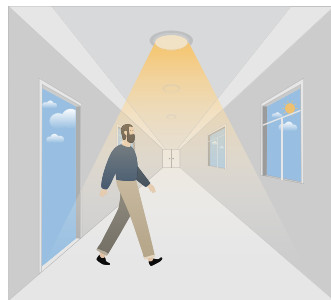
With insufficient daylight, the sensor turns light ON when motion gets detected.



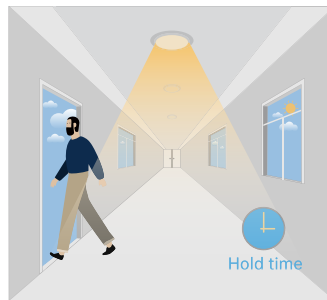
The sensor turns OFF light automatically after the holdtime when there's no motion detected.

2. Daylight Disable

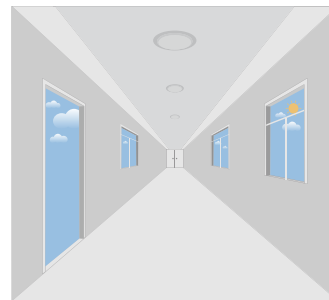
When daylight threshold is preset as "disable", the sensor turns light ON when motion gets detected, and OFF after hold-time.



The sensor turns light ON when motion gets detected.

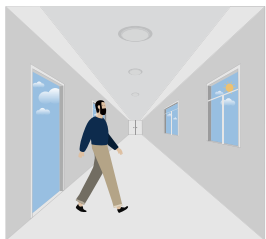


The sensor keeps light ON for holdtime period after motion leaves.

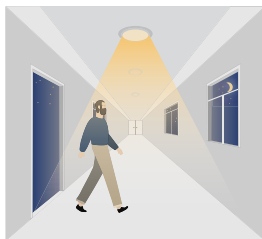


The sensor turns OFF light automatically after the holdtime.

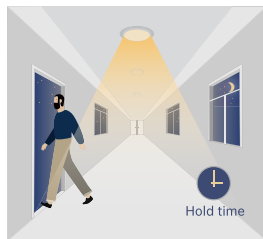
3. Corridor Function, Bi-level Dimmable



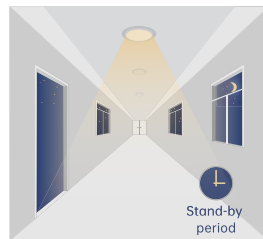
With sufficient daylight, the sensor keeps light OFF even motion gets detected.



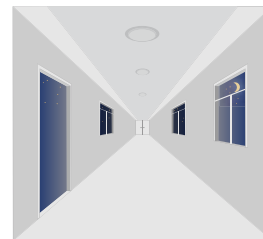
With insufficient daylight, the sensor turns light ON when motion gets detected.



After there's no motion detected, the sensor keeps light ON 100% for holdtime.



After holdtime, sensor dims light to standby dimming level for standby period.



The sensor turns OFF light automatically after the standby period when there's no motion detected.



Attention

1. Please read the instructions carefully before using this product and keep it well for all users to read at any time.
2. The sensor should be installed by qualified electrician and ensure power is off before the installation.
3. We reserve the right to modify any incorrect text, image and necessary technical parameters.
4. Any unauthorized modification is forbidden, otherwise all guarantees will be immediately invalid.

Installation precautions

1. Microwave sensor can be installed in any lamp except the one with full metal shell.
2. The detected surface cannot be shielded by metal objects.
3. Make sure the microwave module is completely exposed outside.
4. The detection surface of the sensor module shall be installed facing the detection area.
5. Should be kept away from the driver to avoid interference generation and lamp flashing.
6. Wiring must be strictly in accordance with the wiring diagram to avoid short circuit.

Application Environment

1. Suitable for indoor installation to avoid false triggering due to external factors such as rain, wind or tree swing.
2. Shall not be installed in the place with all four metal shelters and small space (such as galvanized iron roof).
3. Shall not be mounted installation, so as to avoid false trigger caused by the lamp itself shaking.
4. Shall not be installed next to large operating machines such as ventilator/ceiling fan to avoid false triggering caused by machine vibration.
5. The sensor might be unwanted triggered in rooms that are small, or mostly filled with metal materials; please try to decrease sensitivity when it happens or contact us for support.

User Notes

1. Microwave can penetrate walls or glass thinner than <20mm and attenuate if thicker than <20mm.
2. The driver voltage shall be stable and float within 10%.
3. Detection area will be affected by speed of motion, mounting height and movement volume.
4. Conduct test on sunny days without the lampshade which will affect the tested lux value.
5. 3M distance is suggested when having a lot sensors in one same room.
6. If the sensor is applied in the room with 5G WiFi router, 3M distance or above is needed.